

CardioCase of the Month

Fever and a New Heart Murmur



By Subodh Verma, MD, PhD; Mitesh V. Badiwala, BSc;
and Nicole Look Hong, BSc

CardioCase Presentation

A 43-year-old male stockbroker presented with fever and general malaise. Two weeks prior to admission, he began to experience night sweats and fatigue, in addition to fever ranging from 38.6°C to 39.1°C. He denied any nausea, vomiting, cough, rigors or headache.

History revealed that the patient had rheumatic fever as a child, and had an aortic valve replacement six months ago due to calcified valve leaflets. The aortic valve was replaced with a mechanical prosthetic valve and no post-operative complications were noted. He was on a 5 mg daily dose of warfarin to maintain an INR of 2.0 – 3.0.

Physical examination revealed a temperature of 38.8°C, a pulse of 114 beats per minute, blood pressure of 120/80 mmHg, and a respiratory rate of 15 breaths per minute. A grade III/VI high-

pitched, systolic murmur radiating towards the neck was heard over the upper right sternal border. Paradoxical splitting of the S2 heart sound was also present and was best heard over the upper left sternal border. No other abnormalities were present on physical examination.

Laboratory values revealed white blood cell count of 18,000/mm³, erythrocyte sedimentation rate (ESR) of 30 mm/hr and elevated C-reactive protein. All other values were normal. He subsequently underwent transthoracic echocardiography which uncovered an annular abscess surrounding the aortic valve accompanied by a prominent perivalvular leak.

What's Your CardioCase Diagnosis?

CardioCase Presentation

Prothetic valve endocarditis (PVE) is characterized by any infection of a mechanical or biological valve prosthesis. PVE comprises 10-20% of endocarditis cases and afflicts 2-4% of patients with prosthetic valves. PVE develops in 2-3% of patients within one year of surgery and has a constant risk of 0.5% per year thereafter. Mortality occurs in about 50% of PVE cases. During the first six months following surgery, mechanical valves carry a greater risk of infection than bioprosthetic valves. Aortic valves are more typically affected than mitral valves.

Microbial Etiology

PVE is classified into early (< 60 days post-operatively) and late (> 60 days postoperatively) onset.

Although a plethora of organisms cause PVE, early PVE is often initiated by staphylococci while late disease is commonly found with streptococcal species. Streptococcal PVE often resembles native valve endocarditis (NVE).

Pathogenesis

Pathophysiology varies considerably between bioprosthetic and mechanical valve prostheses. In both cases,

the characteristic endocardial lesion is a non-bacterial thrombotic vegetation (NBTV). This sterile constellation of platelets and fibrin can be colonized during transient bacteraemia and can shield microorganisms from antimicrobial agents and phagocytic cells (Figure 1). However, while bioprosthetic valves often harbour vegetations on valve cusps directly, mechanical valve infections typically originate from the sewing cuff or from thrombi located in areas adjacent to the sewing ring where blood pools. Subsequent periprosthetic leaks and ring abscesses often result (Figures 2 – 4). Intravascular sutures and pacemaker wires may also be foci of infection.

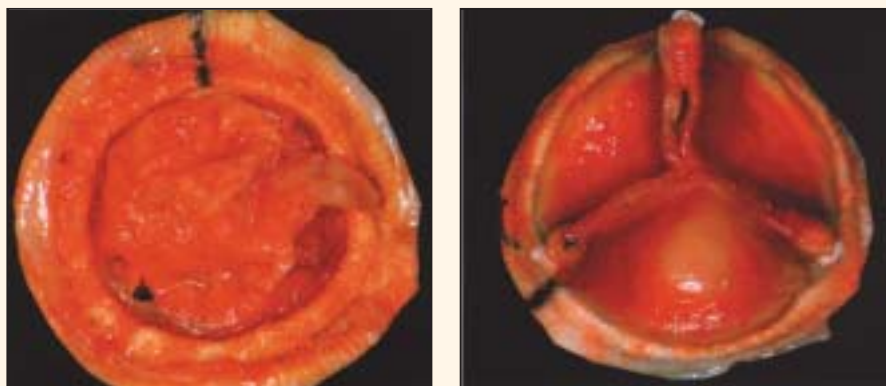


Figure 1: Thrombotic vegetations and thin thrombi covering an Ionescu-Shirley prosthetic mitral valve. Used with kind permission of Willerson JT, Cohn JN, McAllister HA, et al: *Atlas of Valvular Heart Disease: Clinical and Pathologic Aspects*. Churchill Livingstone, New York, 1998, p. 163, Figures 246-247.

About the authors ...

Dr. Subodh Verma is a scientist in the division of cardiac surgery, University of Toronto, and clinical lecturer in the department of pharmacology and therapeutics, University of Calgary.

Mitesh V. Badiwala, BSc, is a 3rd year medical student at the University of Toronto.

Nicole Look Hong, BSc, is a 3rd year medical student at the University of Toronto.

CardioCase Presentation

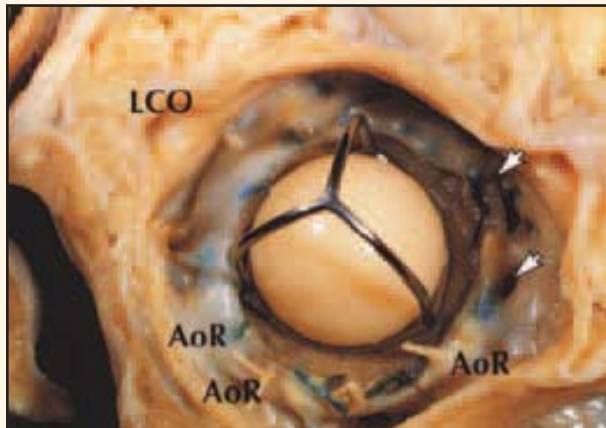


Figure 2: Perivalvular leaks (arrows) around a Starr-Edwards mechanical prosthetic aortic valve. Used with kind permission of Rahimtoola SH: *Atlas of Heart Diseases, Volume XI: Valvular Heart Disease*. Current Medicine, Philadelphia, 1997, p. 1.30, Figure 1-59A.



Figure 3: Ring abscess (arrow) posterior to a Bjork-Shiley valve in the aortic position. Used with kind permission of Rahimtoola SH: *Atlas of Heart Diseases Volume XI: Valvular Heart Disease*. Current Medicine, Philadelphia, p. 1.30, Figure 1-57A.



Figure 4: Ring abscess (arrow) posterior to a Bjork-Shiley valve in the aortic position. Used with kind permission of Willerson JT, Cohn JN, McAllister HA, et al: *Atlas of Valvular Heart Disease: Clinical and Pathologic Aspects*. Churchill Livingstone, New York, 1998, p. 120, Figure 176.

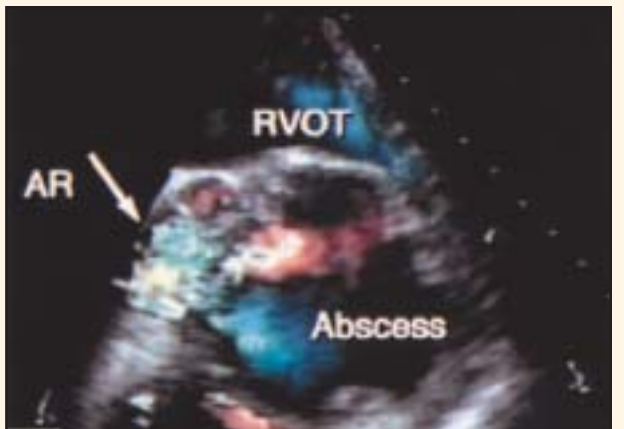


Figure 5: Diastolic frame showing regurgitation and flow into an abscess.

AR = aortic regurgitation;
RVOT = right ventricular outflow tract.

Used with kind permission of Rahimtoola SH: *Atlas of Heart Diseases Volume XI: Valvular Heart Disease*. Current Medicine, Philadelphia, p. 3.25, Figure 3-50C.

Diagnosis

Clinical diagnosis of PVE is based on a cluster of clinical signs and symptoms as well as histological and echocardiographic valvular and perivalvular evaluations.

Duke University Medical Centre has proposed criteria for clinical diagnosis of infective endocarditis, including histological and echocardiographic findings. The most prevalent clinical find-

ings are fever, and a changing or new heart murmur. Other less typical manifestations of PVE are found in Table 1.

Many clinical expressions of endocarditis occur as a result of embolic phenomena that result from thrombotic vegetations that break away from the valvular surface and cause local hemorrhage. These include Janeway lesions, Roth spots, Osler's

CardioCase Presentation

nodes, and splinter hemorrhages.

Other hematological sequela of late PVE include a normochromic normocytic anemia, leucocytosis, circulating immune complexes, an elevated ESR, and an elevated level of C-reactive protein. Although no diagnostic features appear on chest X-ray or ECG, patients with aortic valve endocarditis should be assessed daily for any prominent new rhythm disturbances seen on ECG. With the weakest

part of the annulus situated near the membranous septum and the atrioventricular node, expansion of an aortic infection to flanking tissues may be discerned as a new heart block, as in this case.

A rapid and accurate microbiological assessment, including minimal inhibitory (MIC) and minimal bactericidal concentrations (MBC), is critical to determining an appropriate combination of antibiotic treatment. Although six sets of blood cultures are traditionally taken, PVE can be reliably diagnosed with two or more positive cultures for the same organism.

Echocardiography is the diagnostic tool of greatest benefit. Transthoracic echocardiography (TTE) and transesophageal echocardiography (TEE) detect vegetations as small as 2-3 mm and 1-1.5 mm respectively. TEE, with a superior sensitivity and specificity for detecting vegetations and abscesses to TTE, is ideal for imaging perivalvular injury, the atrial side of the valve and the aortic root (Figure 5). Unfortunately, mechanical valves are strongly echogenic and acoustic reverberations may prevent detection of abnormalities.

Table 1

Common Manifestations of

Clinical Findings

Fever
Weight Loss
Arthralgia or Myalgia
Murmur
Petechiae
Roth's Spots
Osler's Nodes
Janeway Lesions
Clubbing
Emboli
Splenomegaly
Neurologic Symptoms

Laboratory Findings

Anemia
Elevated Erythrocyte Sedimentation Rate
Rheumatoid Factor
Elevated C-Reactive Protein
Proteinuria
Microscopic Hematuria
Leukocytosis
Circulating Immune Complexes
Decreased Serum Complement Level

Treatment

Treatment of PVE is based on appropriate antibiotic therapy balanced with surgical management of mechanical complications. PVE is generally treated with either penicillin G (18-30 million units per day IV) or vancomycin (15 mg/kg IV q12h) for six weeks accompanied by gentamycin (1 mg/kg IV q8h) for at least the first two weeks. Antibiotic therapy should be withheld until microbiology results are confirmed unless the patient is seriously ill. All antibiotic therapy should be administered parenterally to permit adequate absorption. Specific to patients with mechanical valve prostheses, oral anticoagulation therapy should immediately be suspended and intravenous heparin instituted. Successful treatment is detected by negative blood cultures for five to seven days and a reduction in fever.

Surgical valve replacement should be considered if bactericidal therapy is unavailable, positive blood cultures persist following antibiotic treatment or when infection relapse occurs after thera-

CardioCase Presentation

Table 2

AHA Cardiac Conditions and Endocarditis Prophylaxis (EP)

EP Recommended

High-Risk Category

- Prosthetic cardiac valves, including bioprosthetic and homograft valves
- Previous bacterial endocarditis
- Complex cyanotic congenital heart disease (*i.e.* single ventricle states, transposition of the great arteries, tetralogy of Fallot)
- Surgically constructed systemic-pulmonary shunts or conduits

Moderate-Risk Category

- Congenital cardiac malformations other than those listed in the high-risk category
- Acquired valvular dysfunction (*i.e.* rheumatic heart disease)
- Hypertrophic cardiomyopathy
- Mitral valve prolapse with valvular regurgitation and/or thickened leaflets

EP Not Recommended

Negligible-Risk category

- Isolated secundum atrial septal defect
- Surgical repair of atrial septal defect, ventricular septal defect or patent ductus arteriosus (without residual beyond six months)
- Previous coronary artery bypass graft surgery
- Mitral valve prolapse without valvular regurgitation
- Physiologic, functional or innocent heart murmur
- Previous Kawasaki disease without valvular dysfunction
- Previous rheumatic fever without valvular dysfunction
- Cardiac pacemakers (intravascular and epicardial) and implanted defibrillators

py. Immediate valve replacement is indicated in patients with heart failure secondary to severe valvular regurgitation, uncontrolled sepsis, new heart block or to drain myocardial or valve-ring abscesses.

Prevention

All patients with prosthetic valves and patients at risk for endocarditis should receive appropriate antibiotic prophylaxis for invasive procedures with a risk of transient bacteraemia. These include dental and periodontal procedures, respiratory, genitourinary and gastrointestinal procedures and obstetrical or gynaecological procedures. All prophylactic antibiotic administration is directed

against organisms endogenous to the investigated area. The American Heart Association (AHA) has developed clinical guidelines for the prevention of PVE (Table 2).

Conclusion

Late PVE is a major source of mortality and morbidity and attention must be granted to its early diagnosis and prophylaxis. Following diagnosis, prompt and appropriate bactericidal treatments as well as judiciously chosen surgical interventions underlie successful therapy. 